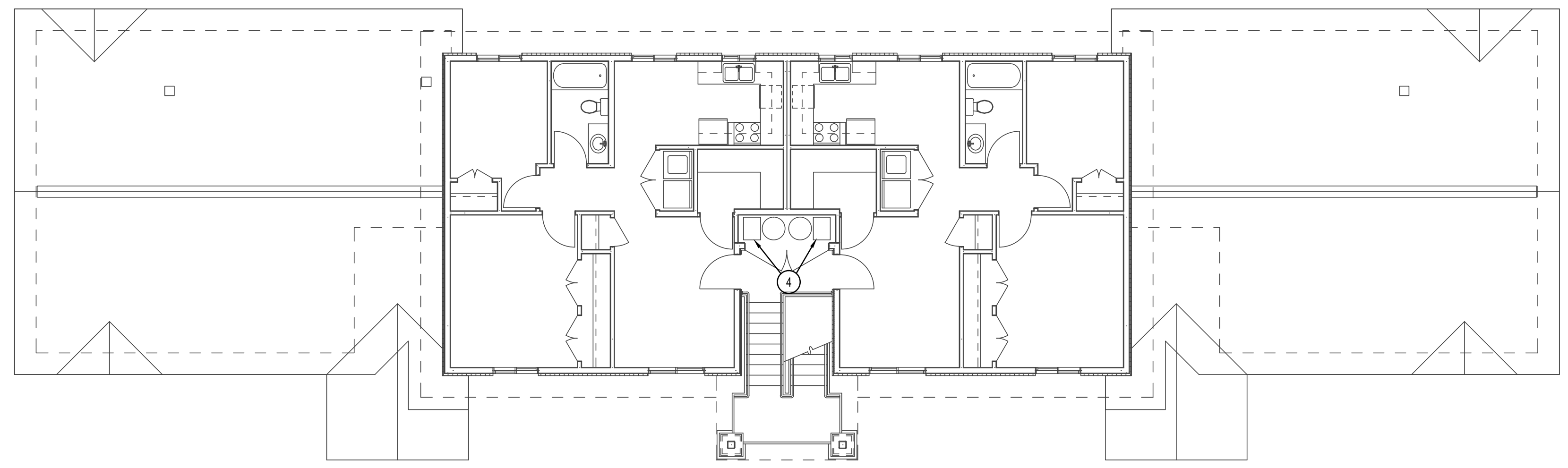
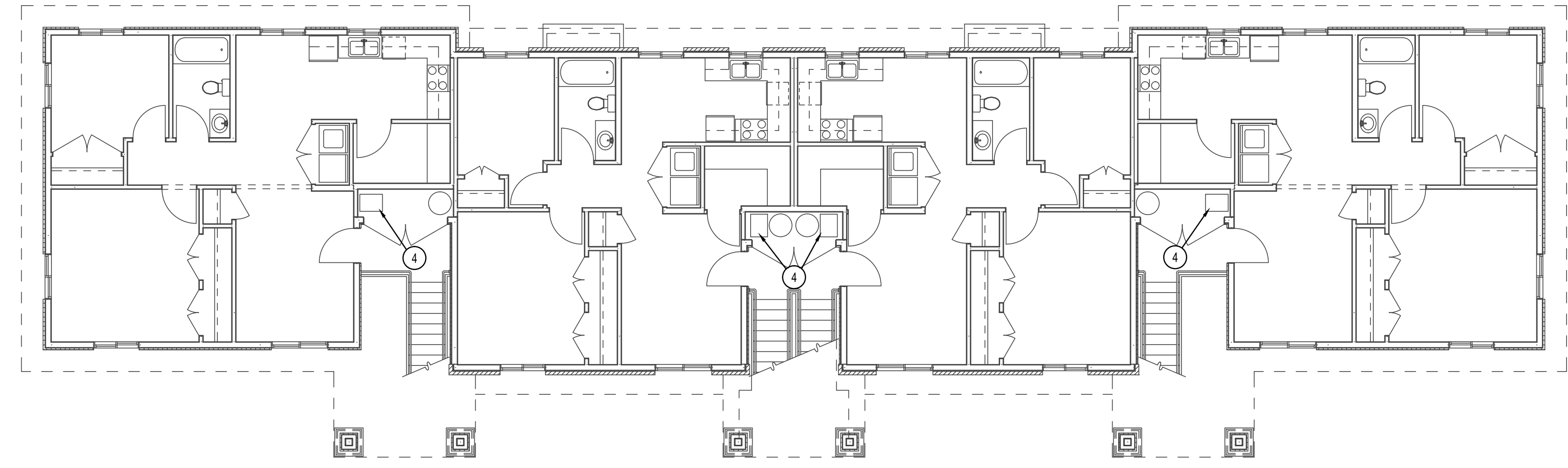


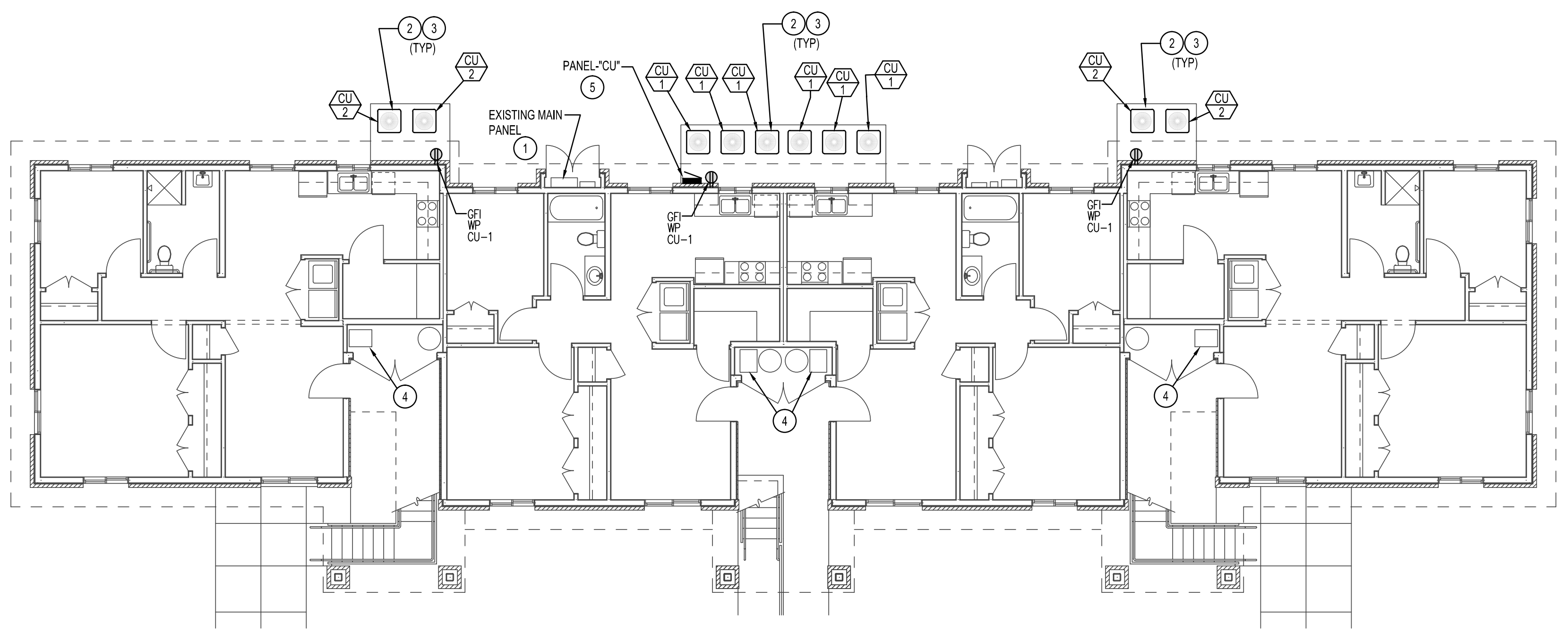
I:\PESERVER\Payne Engineering Data\2018\BYU Village Apartments - 188710\_Working Drawings\1884E1.dwg Jan 07, 2019 - 12:08pm



**3RD LEVEL BUILDING #6 - POWER**  
SCALE: 1/8" = 1' - 0"



**2ND LEVEL BUILDING #6 - POWER**  
SCALE: 1/8" = 1' - 0"



**MAIN LEVEL BUILDING #6 - POWER**  
SCALE: 1/8" = 1' - 0"

**KEY NOTES**

- 1 INSTALL A 2" C. 3-#310 + GROUND TO NEW PANEL-"CU". CONNECT TO SPARE LUG ON LOAD SIDE OF MAIN BREAKER. FEEDER LENGTH SHALL NOT EXCEED 25FT. POSITION PANEL-"CU" ACCORDINGLY.
- 2 PROVIDE AND INSTALL 3/4" C. 2-#10 + GROUND FROM 30A 2P BREAKER TO EACH COND. UNIT. PROVIDE A LOCAL DISCONNECT FOR EACH UNIT NOT IN LINE OF SIGHT TO PANEL-"CU".
- 3 PROVIDE AND INSTALL A 1/2" CONDUIT FROM COND. UNIT TO RESPECTIVE FURNACE FOR CONTROLS. FOLLOW REFRIGERATION PIPING.
- 4 CAREFULLY DISCONNECT EXISTING FURNACE FOR REMOVAL. PROTECT, MAINTAIN AND/OR REESTABLISH SERVICE DISCONNECT AND CIRCUIT TO NEW FURNACE. MAKE ALL REQUIRED CONNECTIONS.
- 5 PANEL-"CU" FEEDER ROUTING SHALL BE ROUTED UNDERGROUND FROM MAIN BREAKER. ALL EXPOSED CONDUIT SHALL BE RGC TAPED AND WRAPPED WERE IN CONTACT WITH EARTH OR CONCRETE.



**Engineered Systems Associates  
Mechanical Engineers**

Dwayne Suchweeks  
1355 East Center - Pocatello, Idaho 83201  
Phone: (208) 233-0501 Fax: (208) 233-0529 email: esa@engsystems.com

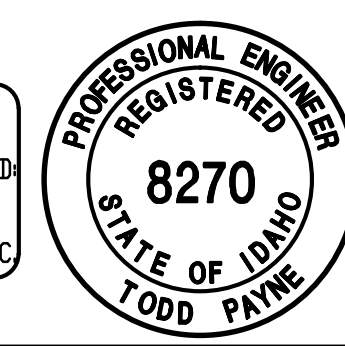
**PROJECT:**  
AIR CONDITIONING FOR:  
**BYU-IDAHO VILLAGE APARTMENTS**  
REXBURG, IDAHO

**SHEET TITLE:**  
BLDG #6 ELECTRICAL PLANS

DRWN. BY: MP	CKD. BY: TP
JOB NO. 18069	DATE: DEC. 2018

**SHEET:**  
E1.3  
**OF:**

ORIGINAL SIGNED BY:  
TODD E. PAYNE  
DATED ORIGINAL SIGNED:  
1-7-2019  
DN FILE AT:  
PAYNE ENGINEERING INC.



P.E. JOB #1894

**IPAYNE Engineering Inc.** Consulting Engineers  
1623 E. Center  
Pocatello, Idaho 83201  
tel (208) 232-4439  
www.payneengineeringinc.com